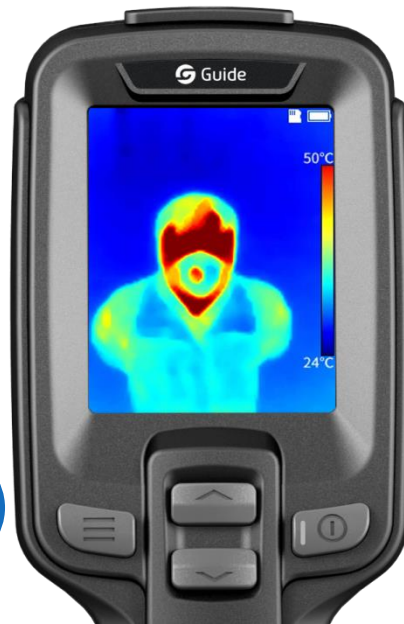




**SAM-4641**

**Fever Screening  
Thermal Camera**

# SAM-4641 Fever Screening Thermal Camera



Accuracy  
 $\pm 0.5^{\circ}\text{C}$



With standard tripod interface, can be equipped with customer's own tripod.

SAM-4641 Fever Screening Thermal Camera is a fast temperature detection tool, which can be used to detect human temperature from a safety distance with accuracy of  $\pm 0.5^{\circ}\text{C}$ . It is an economical and practical thermal camera that could meet the needs of primary temperature screening well. SAM-4641 is not only suitable for flexible temperature screening, but also can be deployed at the entrances and exits of the public area, which makes it an ideal device to improve the efficiency of epidemic prevention and protect public health.



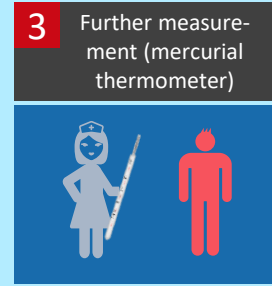
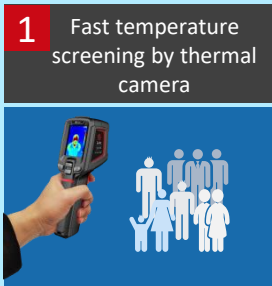
## Features

- Adopt the high sensitive WLP IR detector with independent intellectual property rights
- Fast temperature detection, automatic fever identification and alarm
- 1-meter safe detection distance, low risk of infection, no disturb to detected person
- Support to save up to 100,000 images, can check temperature data
- TYPE-C interface, 2.5H fast charge, battery time up to 8H.
- Compact and portable, suitable for mobile detection, also can be fixed by optional tripod

## Application

Suitable for rapid temperature screening in factories, schools, shopping malls, office buildings and other public places to control and reduce the spread of virus with fever symptom, such as Novel Coronavirus, Ebola, SARS and Zika...

## The process of thermal camera applied to temperature screening



### SAM-4641

Category	Item	Specification
IR Detector	IR resolution	120*90@17μm
	Detector type	Uncooled Vox/7.5~14μm
	Frame Rate	25HZ
	NETD	60mk
	Focal Length/F#	2.28mm/F1.13
	FOV	50° x38°
	IFOV	7.6mrad
	Focus	Focus-free
Image Display	Display type	2.4inch LCD display
	Display Resolution	240*320
	Image Mode	IR Image
Temperature Measurement	Filter Range	20°C-50°C
	Accuracy	≤±0.5°C (Ambient temperature 25 °C, target distance 1m, target temperature 32 °C ~ 42 °C )
	Measurement Point	Central point
	Alarm	Over-temperature alarm, color prompt (preset value: 37.3°C)
Image Storage	Storage Media	TF card (maximum support: 32G)
	Image Format	Full Radiometric (JPG) (120*90)
Communication Mode	USB	TYPE-C, TF Card slot
	Tripod Interface	YES
Power System	Battery Type	Rechargeable Li-ion battery
	Operating Time	> 8H
	Charging Time	DC, ≤2.5H
Enviromental Parameter	Operating Temperature	-10°C~50°C
	Storage Temperature	-40°C~70°C
	Encapsulation	IP54, 2-meter Drop Test
Others	Certification	CE/ROHS/FCC
	Weight	350g
	Dimension	194mm *61.5mm *76mm
	Standard Accessories	Wristband, Quick Start Guide, Charging adapter, Plug, USB cable, 16G TF Card

\*Note: The temperature measurement accuracy is a typical value under the specified mode and application conditions. The final interpretation right belongs to our company.



↑  **GST Refund**  
↑  **Information**  
→  **Toilets**  
↑  **Shops & Cafés**

↑  **GST Refund**  
↑  **Information**  
→  **Toilets**  
↑  **Shops & Cafés**